



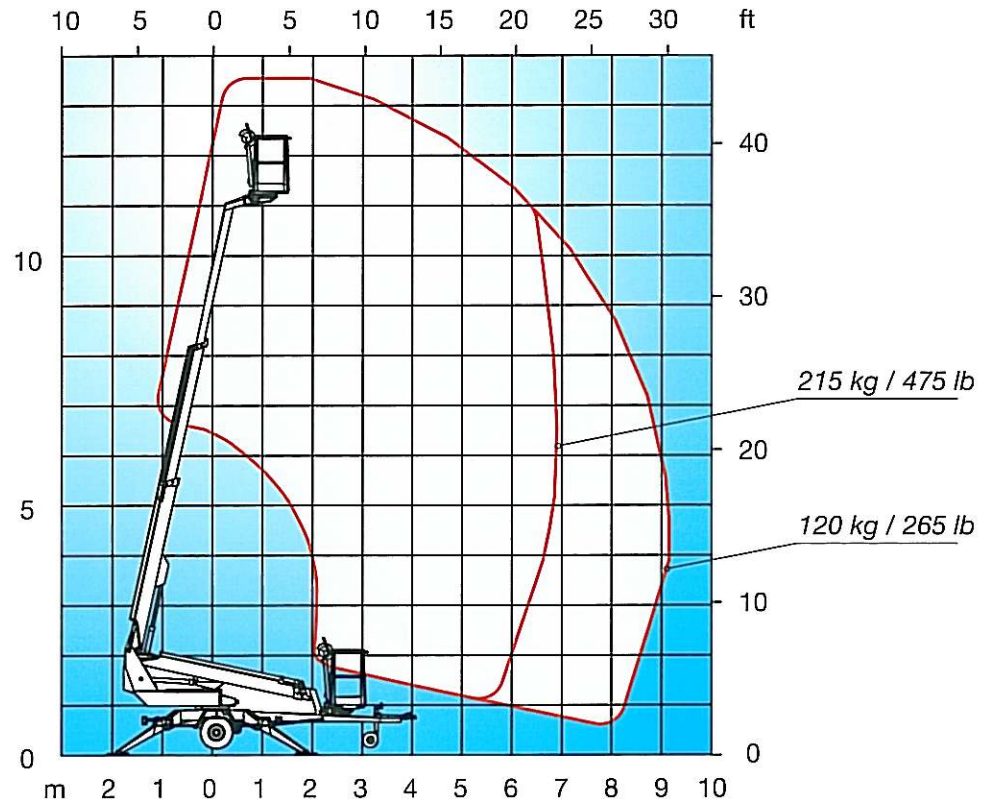
DINO 135T

DINO lift

T-SERIES

DINO 135T

TECHNICAL SPECIFICATION



Working height	13.5 m	44'5"
Platform height	11.5 m	37'10"
Outreach	9.1 m	29'10"
Support width	3.8 m	12'6"
Lifting capacity	215 kg	475 lb
Basket size	0.7 m x 1.3 m	2'4" x 4'3"
Boom rotation	continuous	continuous
Basket rotation	90°	90°
Boom control	proportional	proportional
Transport length	5.94 m	19'6"
Transport width	1.78 m	5'10"
Transport height	2.14 m	7'
Weight	1560 kg	3440 lb
Driving system	standard	standard
AC-socket in the basket x 2	standard	standard
Petrol power pack	optional	optional
Electro motor	standard	standard
Gradeability	25%	25%

The specification is subject to change without prior notice.

DINO Lift

Dinolift Oy
 Raikkolantie 145, FI-32210 Loimaa
 Finland
 Tel. +358 2 762 5900
 Fax +358 2 762 7160
 dino@dinolift.com
 www.dinolift.com

DINO® ACCESS

DINO® SAFETY

DINO® DESIGN

DINO® MOVEABILITY