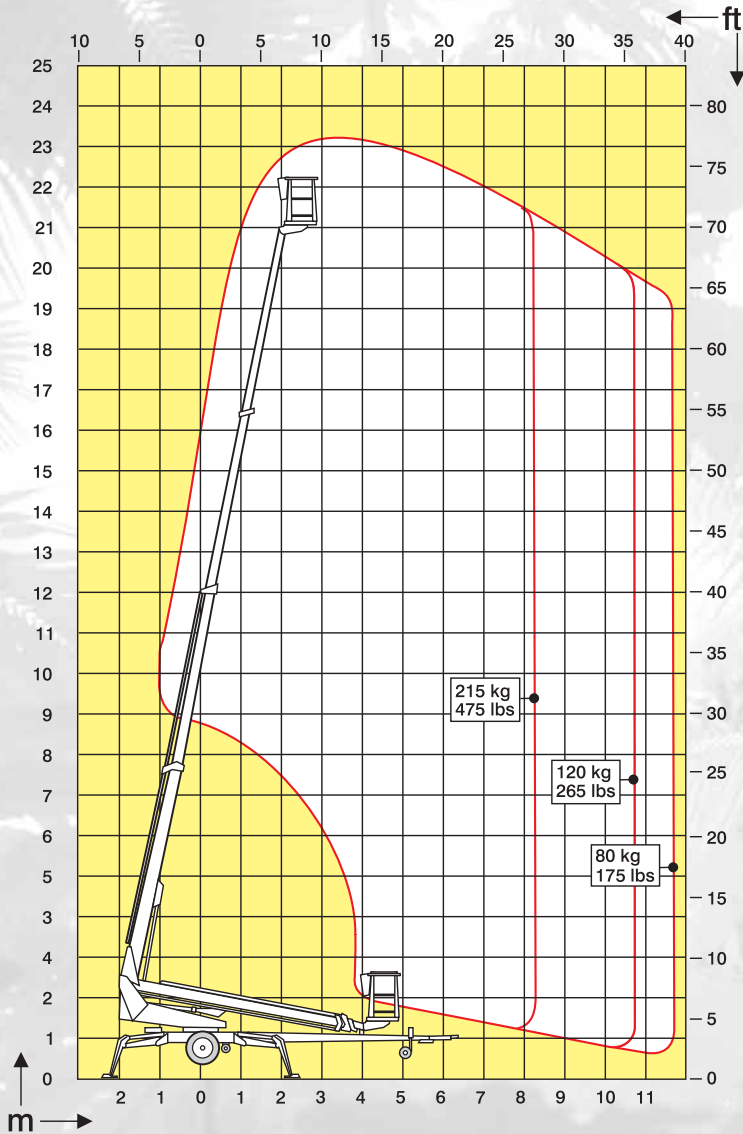


# DINO<sup>®</sup> 230T

Going straight to the top



# Technical specification on DINO® 230T



<b>Max. working height</b>	<b>23.0 m</b>	<b>75'5"</b>
<b>Max. platform height</b>	<b>21.0 m</b>	<b>68'10"</b>
<b>Max. outreach</b>	<b>11.7 m</b>	<b>38'5"</b>
<b>Support width</b>	<b>4.4 m</b>	<b>14'5"</b>
<b>Lifting capacity</b>	<b>215 kg</b>	<b>475 lbs</b>
<b>Basket size</b>	<b>0.7 x 1.45 m</b>	<b>2'4" x 4'9"</b>
<b>Boom rotation</b>	<b>continuous</b>	<b>continuous</b>
<b>Basket rotation</b>	<b>90°</b>	<b>90°</b>
<b>Boom control</b>	<b>proportional</b>	<b>proportional</b>
<b>Transport length</b>	<b>8.29 m</b>	<b>27'2"</b>
<b>Transport width</b>	<b>2.04 m</b>	<b>6'8"</b>
<b>Transport height</b>	<b>2.20 m</b>	<b>7'3"</b>
<b>Weight</b>	<b>2930 kg</b>	<b>6450 lbs</b>
<b>Driving system</b>	<b>standard</b>	<b>standard</b>
<b>AC-socket in the basket x 2</b>	<b>standard</b>	<b>standard</b>
<b>Power supply</b>	<b>230 VAC</b>	<b>230 VAC</b>
<b>Gradeability</b>	<b>25 %</b>	<b>25 %</b>
<b>Petrol generator</b>	<b>5.8 kW</b>	<b>5.8 kW</b>

The specification is subject to change without notice.



The basket of the DINO 230T is spacious. The boom movements may be controlled steplessly with one joystick.

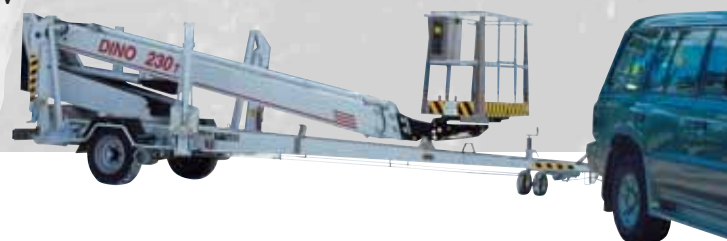


The driving system of the DINO 230T may be operated either with the push buttons on the chassis or with the cable control available as an option.



The petrol generator, provided as standard, produces power for both the platform and tools.

DINO® and Dino Lift® are trademarks registered by the company Dino Lift Oy.



Manufacturer

## DINO Lift®

Dino Lift Oy, Raikkolantie 145, FI-32210 Loimaa, Finland  
Tel. +358 2 76 25 900, Fax +358 2 76 27 160  
E-mail: dino@dinolift.com, www.dinolift.com